

March 5, 2025 | Issue 28

Faith Academy Bellville

# FYI NEWSLETTER

A Weekly Newsletter by Yvonne Woods



**WEDNESDAY, MARCH 19TH  
8 AM - 4 PM**

**SCROLL DOWN THE NEWSLETTER TO YOUR  
RESPECTIVE CAMPUS PAGE.**

***The signup links close on Thurs, March 6 @ 4 PM!***

---

## JUST A FEW HIGHLIGHTS FOR TODAY...

**A Few March Events:**

- \*Report Card Conferences**
- \*Dedication of New Facilities**
- \*Blood Drive**
- & Much More!**

---

## WEEKLY MEMORY VERSES

**Grades K-2**

**John 14:21**

**He who loves Me will be loved by My Father**

**Grades 3-12**

**John 14:21**

**He who has My commandments and keeps them, it is he who loves Me. And he who loves Me will be loved by My Father, and I will love him and manifest Myself to him.**







**THANK YOU  
FAITH  
ACADEMY  
PARENTS**



**THE STAFF AT FAITH ACADEMY WANTS TO EXTEND A  
HEARTFELT THANK YOU TO ALL THE FAMILIES AND  
VOLUNTEERS WHO PROVIDED SNACKS DURING THE FACULTY  
MEETING. YOUR GENEROSITY AND THOUGHTFULNESS IN  
BRINGING JOY TO FAB ARE GREATLY APPRECIATED.**



*-Faith Academy Staff*



# Table of Contents

[Cover Page](#)

[THANK YOU FA PARENTS!!](#)

[Table of Contents](#)

[Daylight Saving Time](#)

[Spring Break](#)

[EEC REPORT CARD CONFERENCE SIGN UP](#)

[K-12 QUICK TIPS FOR A SUCCESSFUL CONFERENCE](#)

[ELEMENTARY REPORT CARD CONFERENCE SIGN UP](#)

[JH REPORT CARD CONFERENCE SIGN UP](#)

[HS REPORT CARD CONFERENCE SIGN UP](#)

[DEDICATION OF NEW FACILITIES](#)

[Blood Drive](#)

[Classroom Observations - 30 Days Remain](#)

[NOK INFOGRAPHIC 2025](#)

[RE-ENROLLMENT & ENROLLMENT](#)

[6th Grade Field Trip Article](#)

[Booster Club Meeting](#)

[Awards Chapels](#)

[7th Grade TX History Field Trip](#)

[In-house Art Festival Info](#)

[Art Categories](#)

[5th Grade Science Fair](#)

[School-wide Garage Sale](#)

[Survive & Thrive](#)

[Survive & Thrive p. 2](#)

[FALCON Summer Sessions](#)

[K-12 March Menu](#)

[EEC March Happenings](#)

[EEC March Menu](#)

[P.I.T. Crew](#)

[Chaplain's Corner](#)

[FFA March Schedule](#)

[Birthday Shout Out](#)

[Previous Announcements](#)

**\*\*RED:**

**New  
announcements**

**\*\*Blue:**

**Previous  
announcements**







**SPRING BREAK**  
**MON-FRI, MARCH 10-14**  
Enjoy the fruits of the season.





# EEC

## REPORT CARD CONFERENCES AND BUILDING DEDICATIONS

WEDNESDAY, MARCH 19TH

8:00A - 4:00P

Staff Lunch: Noon - 1:00 p.m.

EEC Conferences in EEC Bldg. 6

Check in to EEC Bldg. 6

*Act NOW to sign up for your conference time(s).*

**\*\*The links will be closed on  
Thursday, March 6th at 4 PM.\*\***

EEC TODDLERS - <https://signup.com/go/agotseO>

EEC PRESCHOOL - <https://signup.com/go/NqELXoR>

EEC PREKINDER - <https://signup.com/go/fvukrut>

*Please arrange ahead of time for childcare OR  
Childcare will be provided for PARENTS ONLY  
during their conference time.*

*Drop-off is a Bldg. 1*



## FOR A SUCCESSFUL K-12 REPORT CARD CONFERENCE

- 1 Arrive 5 minutes before your appointment time so you can get checked in at Bldg. 3, Door 3-1.
- 2 Arrange ahead of time for childcare OR childcare will be provide for PARENTS ONLY during their conference time.  
**Dropoff is at Bldg. 1.**
- 3 Remember that the conference is a **VERY QUICK check-in** with your child's teacher to see what you can do at home to help with your child's success here at school.

**\*\*You will receive more "QUICK TIPS" once you arrive\*\***

REPORT CARD CONFERENCES ARE WED, MAR. 19



# **ELEMENTARY** **REPORT CARD** **CONFERENCES** **and BUILDING DEDICATIONS**

**WEDNESDAY, MARCH 19TH**

**8:00A - 4:00PM**

**Staff Lunch: Noon - 1:00 p.m.**

**K-12 Conferences in the Gym**

**Check in at the JH Office, Bldg. 3, Doors 3-1**

***Act NOW to sign up for your conference time(s).***

**\*\*The links will be closed on  
Thursday, March 6th at 4 PM.\*\***

**KINDERGARTEN - <https://signup.com/go/GCEYmCt>**

**1ST GRADE - <https://signup.com/go/dmMBwin>**

**2ND GRADE - <https://signup.com/go/sYmNcUs>**

**3RD-5TH GRADE - <https://signup.com/go/ZbbJOoM>**

***Please arrange ahead of time for childcare OR  
Childcare will be provided for PARENTS ONLY  
during their conference time.***

***Drop-off is a Bldg. 1***

# **JUNIOR HIGH**

# **REPORT CARD**

# **CONFERENCES**

**and BUILDING DEDICATIONS**

**WEDNESDAY, MARCH 19TH**

**8:00A - 4:00PM**

**Staff Lunch: Noon - 1:00 p.m.**

**K-12 Conferences in the Gym**

**Check in at the JH Office, Bldg. 3, Doors 3-1**

*Act NOW to sign up for your conference time(s).*

**\*\*The links will be closed on  
Thursday, March 6th at 4 PM.\*\***

**JUNIOR HIGH - <https://signup.com/go/qdyoKDu>**

*Please arrange ahead of time for childcare OR  
Childcare will be provided for PARENTS ONLY  
during their conference time.*

**Drop-off is a Bldg. 1**



# **HIGH SCHOOL REPORT CARD CONFERENCES** and Building Dedications

**WEDNESDAY, MARCH 19TH**

**8:00A - 4:00PM**

**Staff Lunch: Noon - 1:00 p.m.**

**K-12 Conferences in the Gym**

**Check in at the JH Office, Bldg. 3, Doors 3-1**

*Act NOW to sign up for your conference time(s).*

**\*\*The links will be closed on  
Thursday, March 6th at 4 PM.\*\***

**HIGH SCHOOL - <https://signup.com/go/BWWHzfS>**

*Please arrange ahead of time for childcare OR  
Childcare will be provided for PARENTS ONLY  
during their conference time.*

**Drop-off is a Bldg. 1**

# DEDICATION OF NEW FACILITIES



Join us during Report Card  
Conferences at 1:00 pm. We will  
officially dedicate:

- **Elementary/Building 7**
- **FALCON Center/Building 2**
- **EEC FALCON/Building 1**
- **High School/Building 3**

Tours will be available for everyone to  
explore these exciting new additions  
to our learning environment.

## WEDNESDAY, MARCH 19TH

### Dedication 1:00-2:00 PM

(starting at Bldg. 7)

**Campus Tours will be  
available from  
8-12pm and 2-4pm.**

**Please check in at Building 3  
reception to start your tour!**





# BLOOD DRIVE

## Faith Academy of Bellville

**Wednesday, March 19  
9:00 am - 4:00 pm  
Building 2, Door 2-3**

**Free GCRBC Tumbler  
& Ticket to Big Rivers Waterpark**

**All Donors will Receive a Free  
Diabetes Screening!**

**Scan the QR Code to Sign Up!**



*Appointments preferred. Walk-ins welcome.*



*Mia, blood recipient*



**EAT. DRINK. BRING I.D.**

*Save lives on  
the go with*



Complete your Health History Interview before you come in for your donation.

Go to <https://cflexpress.giveblood.org/> and complete the same day as your appointment.



# Classroom Observation

## **CLASSROOM OBSERVATION DAYS FOR PARENTS SPRING SEMESTER 2025**

Things you should know:

- There are **30** observation days in the spring semester
  - **May 9** is the last day to observe

- The following days are not available for observations:

Fri, March 7: Staff Inservice (No school for students)

Mon-Fri, March 10-14 (Spring Break)

Wed, March 19 (Report Card Conferences)

Fri-Mon, April 18-21 (Good Friday & Easter Monday)

Mon-Fri, April 28-May 2 (IOWA testing for JH & Elementary)

Mon-Fri, April 28-May 2 - Observations in EEC & HS is ok



# Faith Academy of Bellville -- Night of Knights

## MISSIONS POSSIBLE

### Accomplished

Saturday, February 8th, 2025

Night of Knights is our biggest annual fundraising event. This year's theme highlighted local and global missions studied by all grades. The funds collected support Faith Academy of Bellville, enabling us to maintain our commitment to delivering high-quality education at an affordable cost.

**This year's gala was a success with approximately \$210,000 raised!**

#### Live Auction



**\$98,175**

37 Items from  
Trips, Guns  
Flowers & Food

#### Salutes



**\$3,100**

\$ Donated Directly  
for Teachers

#### Kubota Sales



**\$75,000+**

Gloria Velazquez (5th  
Grade) Sold the Most  
Tickets Raising  
\$2600!

#### Dessert Auction



**\$9,090**

75 Delicious  
Desserts Prepared  
by YOU!

Up \$2,080 from 2024!

#### Silent Auction



**\$17,165**

74 Amazing Baskets  
+ 10 Priceless  
Student Art Pieces

#### Attendees



**386**

Registered Guests

#### Entertainment



Countless Laughs  
from the Skit  
Featuring Mrs. Byler,  
Ms. Watson, Susie  
Kelly & students

#### Learning



Seven Themed Tents  
Featuring Arts, Crafts,  
Videos, and Cuisine for  
Each Country Studied  
by FAB Students





**RE-ENROLLMENT  
FOR CURRENT  
FA STUDENTS IS \$175**

**RESERVE YOUR SPOT!**

**ENROLLMENT  
IS NOW OPEN  
TO THE PUBLIC**

**CLASSES ARE FILLING!**



***From Mrs. Schuknecht .....***

.....

### **6<sup>th</sup> Grade Field Trip**



Vinegaroon

The 6<sup>th</sup> grade class visited the Houston Museum of Natural Science on their February 26<sup>th</sup> field trip. We had a wonderful time. In class, we had been studying Creation and Evolution and were so excited to see the HMNS would tell the story. Our students participated in a scavenger hunt and showed proof of findings via photos on an iPad. We began in the special exhibit on sharks and were allow to pet sharks, rays, and starfish. We spent a great deal of time in the Hall of Paleontology seeing the dinosaurs and trilobites. We were able to see the Lucy exhibit and to our delight defend our belief due to our previous study on Adam or Ape. Lastly, we visited the Butterfly exhibit and got to see all kinds of insects including tarantulas, walking sticks, vinegaroons, and of course, a bazillion butterflies! It was a great day!





**BOOSTER CLUB MEETING**

**5:00P**

**BLDG. 3 DEVOTIONS ROOM**

**MEETING DAY CHANGED TO**  
**MONDAY, MARCH 17 @ 5:00 PM**  
(due to Baseball game)

**MONDAY, APRIL 14**

**MONDAY, MAY 5**





ACADEMIC  
**AWARDS CHAPELS**

MONDAY, MARCH 24TH



ELEMENTARY AWARDS @ 8:00A



JH & HS AWARDS @ 9:00A



GYMNASIUM - ALL ARE INVITED  
SIGN IN AT BLDG. 3, DOOR 3-1



## 7<sup>th</sup> Grade Field Trip~Texas History Trail ALAMO~BANDERA~MONUMENT HILL

**March 25<sup>th</sup> & 26<sup>th</sup>**

- FORMS WENT HOME WITH YOUR STUDENT ON 3/3/25
- FORMS DUE NO LATER THAN MONDAY, MARCH 17<sup>th</sup>
- YOU DO NOT NEED TO SEND PAYMENT
- YOUR FACTS ACCOUNT WILL BE BILLED ACCORDING TO ATTENDEES SPECIFIED ON THE FORM.

Questions? [Events@faithacademybellville.org](mailto:Events@faithacademybellville.org) ~ Suzi Cano



# FAB ART FESTIVAL



**ART PROJECT DEADLINE MARCH 27TH**

**PARENTS!!!**

If your child is in grades K-12, you may have heard the buzz about the annual Art Festival. We will have an in-house judging Tuesday April 1st. The students who qualify at this level will move on to the Art Festival on April 11th. The festival will be hosted by Faith Academy, where there will be other area wide schools in attendance. All art must be the students original work and many have been working on their art pieces with Mrs. Deering and Ms. Kohn already. The students can also work on their art entries at home as long as it was created within this school year.

**ALL ART MUST BE TURNED IN ON OR BEFORE THURSDAY MARCH 27TH!**

**PLEASE ENCOURAGE YOUR STUDENTS  
TO PARTICIPATE**

**Categories are attached. Please email or call Suzi Cano with any questions  
979-865-1811 | [events@faithacademybellville.org](mailto:events@faithacademybellville.org)**

# **FAB ART FESTIVAL**

## **Categories**

**CALLIGRAPHY:** abstract patterns/designs, architectural/commercial designs, hand lettering

**DIGITAL ART:** artwork produced entirely in electronic form - original creation or digitally enhanced student-generated work, graphic design (text with images), 3-D printing

**DRAWING - BLACK & WHITE:** media - chalk, charcoal, ink, pencil, pigma/technical pen, scratchboard

**DRAWING - COLOR:** media - colored pencil, colored ink, crayon, felt markers, pastels (students may enter pastels in the painting category at their discretion)

**FABRIC ART:** cloth mosaic/collage, embroidery, fabric painting, quilting

**FIBER ART:** knitting, crochet, weaving, felting, braiding, macrame, lace making, rug/latch hook, stitchery, string art, fiber sculpture

**MISCELLANEOUS ART:** basketry, jewelry, leather, metal, recycled art, wood, alternative photographic processes (cyanotype, etc.)

**MIXED MEDIA:** a combination of two or more categories, or artwork can be entered in its dominant category

**PAINTING:** media - acrylics, airbrush, encaustics, finger paints, oil, tempera, watercolor

**PAPER ART:** cast paper, diorama, origami, paper mosaic/collage, paper projects, altered art, art journaling

**PHOTOGRAPHY - FILM:** Images created with a film camera and printed on silver gelatin paper, color or black and white. It may be commercially processed or student processed.

**PHOTOGRAPHY - DIGITAL:** black and white or color (Photographs that include any person(s) must be accompanied by a completed photo release form for each person in the photograph.)

**POTTERY:** (functional pieces from fired clay) wheel-thrown or handmade

**PRINTMAKING:** relief, intaglio, rubbings, silk screen, sponge, stamping, stenciling

**RELIEF SCULPTURE** (*including subtractive process*): works presented in a relief extending over 1/4 inch above the surface or base

**SCULPTURE - 3 DIMENSIONAL, SHAPED BY THE STUDENT:** media - ceramic with handmade mold, clay, metal, paper mache, plaster, soap, stone, wood





**JOIN US FOR AN EXCITING  
SCIENCE FAIR WHERE  
FIFTH GRADE MINDS  
EXPLORE THE WONDERS  
OF GOD'S WORLD.**

## 9:00 AM

# BUILDING 7 UPSTAIRS GREAT ROOM



# FAITH ACADEMY GARAGE Sale

Do you have items  
you don't need or  
want?



Consider donating your  
unwanted items to this  
excellent fund-raising  
event!

**SATURDAY, MARCH 29TH @ 8 AM**  
**Faith Academy Events Center Door 3-10**

**DROP OFF BEGINS AFTER SPRING BREAK -**  
**ARRANGE DROP OFF WITH MRS. CANO**  
**SCANO@FAITHACADEMYBELLVILLE.ORG | 979-865-1811**

*All proceeds will go towards assisting the events  
department with staff appreciation and special events!*

Sponsored by Focus 4 - FA Events Dept - FA Families





# Mrs. Watson's Survive & Thrive



**Due to numerous requests to share pizza ingredients used in class, here is our recipe:**

**\*Everything was purchased at Brookshire Bros:**

**Homestyle biscuits (Texas style)**

**Food Club pizza sauce (Traditional)**

**Grated mozzarella cheese**

**Pepperoni**

**We put a small amount of flour on the biscuits and pressed them as flat as possible with our hands. Then we added the pizza sauce as well as the cheese. Pepperoni was optional.**

**Baked at 400\* for 10 minutes.**

**Only thing left to do was EAT!**



**WE ARE BACK IN THE KITCHEN AGAIN!**





S  
U  
R  
V  
I  
V



T H R I V E







# Summer SESSIONS

**Monday - Friday 9am-3pm \*50 minutes**

***June 2nd-13th \* July 7th-18th***

**Faith Academy Students \$40 per session**

**Non-FA Students \$60 per session**

## **Offering:**

**Interactive Metronome, QRI Cold Laser**

**Primitive Reflex Integration, and**

**Vision Exercises**

**Speech Therapy - available for 30min sessions**

## **Improving:**

**Academics, Focus & Concentration**

**Impulsiveness & Behavior**

**Balance and Coordination**

**Sensory and Visual Processing**

**Sports Performance**

**For more information contact:**

**FALCON@faithacademybellville.org or 979-865-1811**

***\*Assessment fee for FA student not currently in FALCON - \$100***

***\*Assessment fee for non FA Student - \$200***

***\*Speech Assessment is a separate fee***

# March

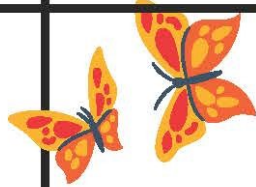
ELEMENTARY/JH/HS 2025

*God keeps His promises*

GENESIS 9:12

Sun	Mon	Tue	Wed	Thu	Fri	Sat
9	10	11	12	13	14	15
	Mini Corndogs (6) Chips Fruit Dessert	Santa Fe Bake Fruit Dessert	Chicken Noodle Soup Fruit Dessert	Spaghetti Peas Fruit Dessert	<b>Student Holiday</b>	
16	17	18	19	20	21	22
	Italian Sliders Fiesta Potatoes Fruit Dessert	Fajita Bowl Fruit Dessert	Report Card conferences No School	Beef Stew Corn Bread Fruit Dessert	Hamburger French Fries Fruit Dessert	
23	24	25	26	27	28	29
	Pizza Sticks (3) Corn Fruit Dessert	Chicken Taquito (4) Refried Beans Corn Dessert	Chicken Sandwich Chips Fruit Dessert	Tator Tot Casserole Green Beans Fruit Dessert	Hamburger Curly Fries Fruit Dessert	
30	31					
	Grilled Ham & Cheese Chips Fruit Dessert					
					<b>JH/HS/Staff</b> -Hot lunch \$5 -Entrée \$2 -Side \$1 -Dessert \$1	<b>Elementary</b> -Hot lunch \$5 -Large Salad \$5 -Milk \$1

Spring Break







# EARLY EDUCATION CENTER

## ***MARCH AT A GLANCE . . .***

3/ 3- Dr. Seuss fun

3/7- Teacher Work Day—no school

3/10- 3/14- Spring Break

3/19- Report Card Conferences- No School

## ***MARCH MUSIC***

The Birds Upon the Treetops

Signing Time - Magic Words

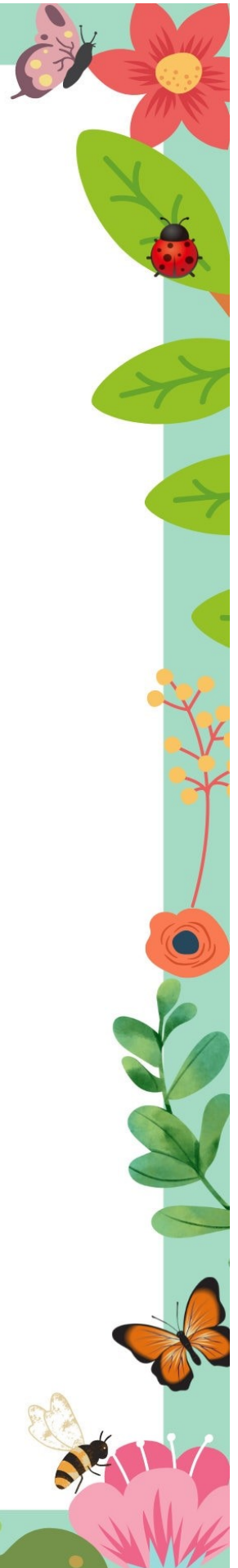
Silly Willy

Keep Walking With The Lord

Who Let the Letters Out?

Take Me Out to the Ball Game

***Menu on next page....***



# March 2025 EEC



Sun	Mon	Tue	Wed	Thu	Fri	Sat
2	3 Hot dog Chips Cheese stick Vegetable/Fruit Cookie	4 Salami/cheese Stackers, pickle Yogurt, vegetable Fruit/Cookie	5 Pancakes Hash browns Sausage Yogurt Muffin	6 Beef Taco Tortilla Chips Vegetable Fruit Cookie	7 <b>Staff Work Day</b> <b>No School</b>	8
9	10 <b>Spring Break</b> <b>No School</b>	11 <b>Spring Break</b> <b>No School</b>	12 <b>Spring Break</b> <b>No School</b>	13 <b>Spring Break</b> <b>No School</b>	14 <b>Spring Break</b> <b>No School</b>	15
16	17 Fish Sticks Mac-n-cheese Vegetable Fruit/Cookie Cookie	18 Chicken Nuggets Chips Vegetable Yogurt/Fruit Cookie	19 <b>Report Card</b> <b>Conferences</b> <b>No School</b>	20 Mini Corn Dogs Chips/pickle Vegetable/Fruit Cookie	21 Pizza (turn order in by Wednesday)	22
23	24 Hot dog Chips Cheese stick Vegetable/Fruit Cookie	25 Beef Taco Tortilla Chips Vegetable Fruit Cookie	26 Ham/Cheese on Croissant Chips Vegetable/Fruit Cookie	27 Pancakes Hash browns Sausage Yogurt Muffin	28 Pizza (turn order in by Wednesday)	29
30	31					<b>*Menu subject to change</b> <b>*Lunch: \$4.00</b> <b>*Breakfast \$2.00</b> <b>*Pizza \$2.00/slice</b>



**For the weapons of our warfare  
*are* not carnal but mighty in God  
for pulling down strongholds!**

**II Corinthians 10:4**

**PIT CREW PRAYER**  
**P.I.T. PARENT INTERCESSORY PRAYER**

**Meet in Bldg. 3 / Devotions Room**

**8:00—8:20 a.m.**

**March 21**

**April 11**

**May 9**



# CHAPLAIN'S CORNER



*I have been crucified with Christ. It is no longer I who live, but Christ who lives in me. And the life I now live in the flesh I live by faith in the Son of God, who loved me and gave himself for me.*

*Galatians 2:20 ESV*

Has the practice of your faith seemed dry, repetitive and possibly ritualistic? Do you find yourself saying statements like “I need to go to church”, “I need to do my devotional” or “I have to go through Scripture today?” Over-emphasis on the “I” can lead us down a path that paints the Christian life as being something that we need to initiate and activate on our own. “We need to be self-starters in our walk with Christ” are what these statements are suggesting. In thinking this way it is easy to become frustrated, spiritually defunct, and isolated. Instead, a better way to view our spiritual life is that it needs to be activated.

-In the person of Jesus Christ we find a constitution of both God and human. Jesus is the member of the Trinity that introduces us to participation with the Godhead as a result of this constitution and His sacrifice on the cross. It is through Christ that we start to participate with God in discipleship, community, and mission (John 14:6).

-Discipleship becomes an expression of our faith as we participate with Christ in self-sacrifice as we are crucified to our own desires and life plans living no longer for ourselves but for Christ whom we are now one with (Galatians 2:20).

-Our unity with other believers in the community of the church is forged as a result of participating in union with Christ (Romans 12:4-5).

-By participating with Christ we have a mission that goes beyond our own efforts and plans. We actually participate with Christ in evangelism, teaching, preaching, and other forms of ministry as opposed to initiating a ministry on our own efforts and energy (John 20:21).

So, when the practice of your faith seems spiritually dry and prone to legalistic ritual, ask God how it is He wants you to participate with Him today. It is in participation with our triune God that we find wholeness in our spiritual lives and in our day to day existence.

*by D.T. McDow*

Praying blessings as we participate *with* Christ!

Amy Catlett, Chaplain



# FFA MARCH SCHEDULE



## FFA MARCH MEETING

INFORMATIVE ANIMAL PROJECT AFTER  
FREE MOVIE SCREENING

Thursday, March 20 at 4:30 p.m.  
Event Center



FFA Sponsor.....

Mrs. Cierra Hines-Hacker

[chines@faithacademybellville.org](mailto:chines@faithacademybellville.org)

*Premier Leadership  
Personal Growth  
Career Success*





# BIRTHDAY Shout Out OPPORTUNITIES

Celebrate your student's birthday and your financial contribution goes towards staff appreciation events - it's a great way to honor your student and support our FAB staff!

Option 1: \$20

**Birthday Message  
on the Hwy 36  
Digital Marquee**

Option 2: \$25

**Birthday Book  
Donated to the  
Library**

Option 3: \$40

**Birthday Bundle  
(Marquee +  
Book)**

*\*Option 1 is available for EEC to High School*

*\*Options 2 - 3 are only available for EEC to Junior High*

## To Submit Your Request

Access and submit online forms via...

- **Mobile App:** Go to the 'Parent Resources' icon > select 'Birthday Shout Out Opportunities'
- **FAB Website:** Go to 'Resources' > select 'Parent Resources'

**Questions? Email [ywoods@faithacademybellville.org](mailto:ywoods@faithacademybellville.org)**



# **PREVIOUS ANNOUNCEMENTS**

## **ON THE FOLLOWING PAGES**

Throughout the year, you will find important announcements beyond this page that are worthy of remaining in the newsletter, for your convenience.



# Mrs. Watson's Survive & Thrive



## Wish List for Elementary S&T

- \*Sewing machines/thread (any color)**
  - \*Scissors for cutting material**
  - \*Compasses (30) to learn about N S E W**
  - \*Potting soil and compost for THE PATCH and planters**
  - \*Sand paper (any grit, any size)**
  - \*Cooking pots for small batches of soup or hot dishes (approx. 2 – 3 qt. size) Lid is optional.**
  - \*\*do not need skillets**
  - \*\*Any monetary donations are much appreciated**
- \*Any parent(s) willing to help anytime is more than welcome!! Classes are on Wednesdays.***



**WISH LIST**





**FAITH ACADEMY  
BELLVILLE**

# UNIFORM ORDER



For More Information  
979-413-5367

Visit Our Website  
[BrandedDesigns.net](http://BrandedDesigns.net)



# Sewing Machines

**WE ARE IN THE MARKET FOR SEWING  
MACHINE DONATIONS!**

## ***3-5th Grade Students***

We will create items, under the direction of Mrs. Watson, such as a wall hanging, a personal carry bag for our supplies, and create unique pieces from scratch. We may even make a tablecloth for the classroom!

## **SUPPLIES NEEDED**

**Small pieces of material**

**Large pieces of material**

**Personalized Service from  
volunteer parents**

**Survive & Thrive**





FAITH ACADEMY BELLVILLE

# WE ARE HIRING



## OPEN POSITIONS

- SUBSTITUTES
- CUSTODIAL STAFF
- STAY AND PLAY



[HTTPS://WWW.FAITHACADEMY  
BELLVILLE.ORG/WHO-WE-  
ARE/EMPLOYMENT.CFM](https://www.faithacademybellville.org/who-we-are/employment.cfm)



# FAITH ACADEMY BELLVILLE 2024-2025 Academic Calendar

**AS of Oct. 25, 2024**

## August 2024

THE ONLY CHANGE is the EARLY DISMISSAL TIMES

**1-12 - TEACHER IN-SERVICE**

**8 - K only Kinder Camp 6:00**

**9 - Parent KickOff EEC & 1-12 5:30**

**12 - CHALK WALK 5-7 PM**

**13 Staff off /OFFICE CLOSED**

**14 - FIRST DAY OF SCHOOL**

**16-17 FA Varsity Volleyball Tourm**

## September 2024

**2 - HOLIDAY Labor Day**

**4 - Progress Report Posted**

**9 - FA Grandparent Chapel**

**25- Progress Report Posted**

## October 2024

**9 - EARLY DISMISSAL -Western Day**

**10-11 - HOLIDAY Austin Co. Fair**

**12 FAB CROSS COUNTRY MEET**

**16 - Report Card Conf / Blood Dr. AL**

**21 - Awards Chapel**

## November 2024

**1 - HOLIDAY -Teacher Work Day**

**3 - Time Change**

**6 - Progress Report Posted**

**25-29- HOLIDAY Thanksgiving**

## December 2024

**4 - Progress Report Posted**

**9 - FA Athletic Awards Banquet**

**17 - K-5 Christmas Program 6 PM**

**18-19-20 JH/HS Final (Due DoA 12/2)**

**20 - EARLY DISMISSAL/Staff Party**

**23-31 - HOLIDAY Christmas**

Key:

**ALL DAY REPORT CARD CONFERENCE**

**PROGRESS REPORTS POSTED**

**REPORT CARDS POSTED**

**SCHOOL OFFICES CLOSED**

**GRADING PERIOD ENDS**

**2024-2025**

## August 2024

S	M	T	W	T	F	S
				1	2	3
4	5	6	7	8	9	10
11	12	13	14	15	16	17
18	19	20	21	22	23	24
25	26	27	28	29	30	31
School days in Aug = 13						

## January 2025

S	M	T	W	T	F	S
				1	2	3
4	5	6	7	8	9	10
11	12	13	14	15	16	17
18	19	20	21	22	23	24
25	26	27	28	29	30	31
School days in Jan. =19						

## January 2025

**1-3 HOLIDAY Christmas**

**3 - TEACHER IN-SERVICE/WORK DAY**

**6 - Students return to school**

**8 - Report Cards POSTED**

**13 - Awards Chapel**

**20 ML King HOLIDAY\*\***

**29 - Progress Report Posted**

## September 2024

S	M	T	W	T	F	S
1	2	3	4	5	6	7
8	9	10	11	12	13	14
15	16	17	18	19	20	21
22	23	24	25	26	27	28
29	30					
School days in Sept = 20						

## February 2025

S	M	T	W	T	F	S
						1
2	3	4	5	6	7	8
9	10	11	12	13	14	15
16	17	18	19	20	21	22
23	24	25	26	27	28	
School days in Feb =19						

## February 2025

**8 - Night of Knights**

**17- HOLIDAY President's Day\*\***

**19 - Progress Report Posted**

## October 2024

S	M	T	W	T	F	S
		1	2	3	4	5
6	7	8	9	10	11	12
13	14	15	16	17	18	19
20	21	22	23	24	25	26
27	28	29	30	31		
School days in Oct = 19 1/2						

## March 2025

S	M	T	W	T	F	S
						1
2	3	4	5	6	7	8
9	10	11	12	13	14	15
16	17	18	19	20	21	22
23	24	25	26	27	28	29
30	31					
School Days in March- 14						

## March 2025

**7 - HOLIDAY -Teacher Work Day**

**9 - Time Change**

**7, 10-14 HOLIDAY Spring Break**

**19 - Report Card Conf / Blood Dr ALL**

**24 Awards Chapel**

## November 2024

S	M	T	W	T	F	S
					1	2
3	4	5	6	7	8	9
10	11	12	13	14	15	16
17	18	19	20	21	22	23
24	25	26	27	28	29	30
School days in Nov = 15						

## April 2025

S	M	T	W	T	F	S
		1	2	3	4	5
6	7	8	9	10	11	12
13	14	15	16	17	18	19
20	21	22	23	24	25	26
27	28	29	30			
School days in April = 20						

## April 2025

**18 - Good Friday**

**21- Easter Monday**

**9 - Progress Report Posted**

**30 - Progress Report Posted**

**28-May 2 Standardized Testing ELEM**

## December 2024

S	M	T	W	T	F	S
1	2	3	4	5	6	7
8	9	10	11	12	13	14
15	16	17	18	19	20	21
22	23	24	25	26	27	28
29	30	31				
School days in Dec =14 1/2						

## May 2025

S	M	T	W	T	F	S
				1	2	3
4	5	6	7	8	9	10
11	12	13	14	15	16	17
18	19	20	21	22	23	24
25	26	27	28	29	30	31
School days in May = 14 1/2						

## May 2025

**1 - Finals due to DoA (JH/HS)**

**12- Senior Send Off / Academy Awards**

**15- ELEM /JH Awards Presentations**

**18- HS Graduation**

**19- Kinder Graduation & Last Day/EEC**

**21- LAST DAY -- EARLY DISMISSAL \***

**22-23 -- TEACHER IN-SERVICE**

**May 28 - Final Report Cards POSTED**

School days in Dec =14 1/2

School days in May = 14 1/2

EARLY DISMISSAL--Elem @ 11:20 EEC @ 11:30 JH/HS @ 11:40

\*\* BAD WEATHER MAKE-UP DAY, if needed

\*\*TOTAL MIN 75,916 hrs (leaves 316 min over) 75,600 required





# FAITH ACADEMY IN PARTNERSHIP WITH BRENHAM TUTORING

## After School Tutoring

Tutor: Carrie Deering, FA Elementary  
Art Teacher

Certifications: EC-6 Generalist, 4-8

Science, EC-8 GT & EC-8 ESL

Location: FA Elementary Art Room


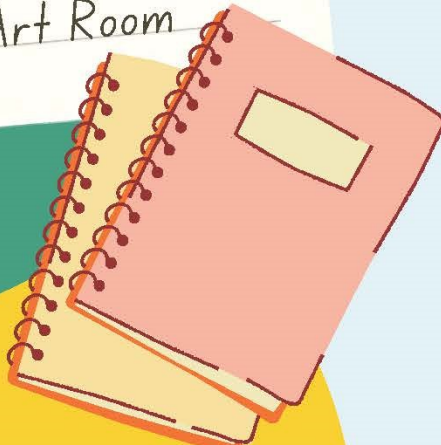


REGISTRATION  
IS NOW  
**OPEN**

**SMALL  
GROUP  
SESSIONS**

**\$40**  
PER  
SESSION

### AVAILABLE SESSIONS

- 
- 
- Tues: 3rd Grade Math 3:30-4:30
  - Wed: K-2 Literacy 3:30-4:30
  - Wed: 3-5 Literacy 4:40-5:40
  - Thurs: 4th Grade Math 3:30-4:30
  - Friday: 5th Grade Math 3:30-4:30



For more information and registration  
email: [brenhamtxtutoring@gmail.com](mailto:brenhamtxtutoring@gmail.com)

[www.brenhamtutoring.com](http://www.brenhamtutoring.com)

# COMMUNICATIONS MADE *easy!*

We are helping families stay informed with new online tools including a refreshed website, new mobile app and online medical records.

Check them out today!

**WWW.FAITHACADEMYBELLVILLE.ORG**



## REFRESHED WEBSITE

A new look and now even more helpful information! Learn about our school, access parent resources and stay up to date on the latest events.



## MOBILE APP

Our Family App is a one-stop-shop for our parents, students, and staff. Access grades, pay tuition, add lunch \$, report an absence, access medical records, read the FYI newsletter and more!

SCAN TO DOWNLOAD



## ONLINE STUDENT MEDICAL RECORDS

Magnus Health is our new online student medical records system, accessible from FACTS and the mobile app. Information such as medications, allergies, FALCON charts and on-campus medical incidents are recorded here.